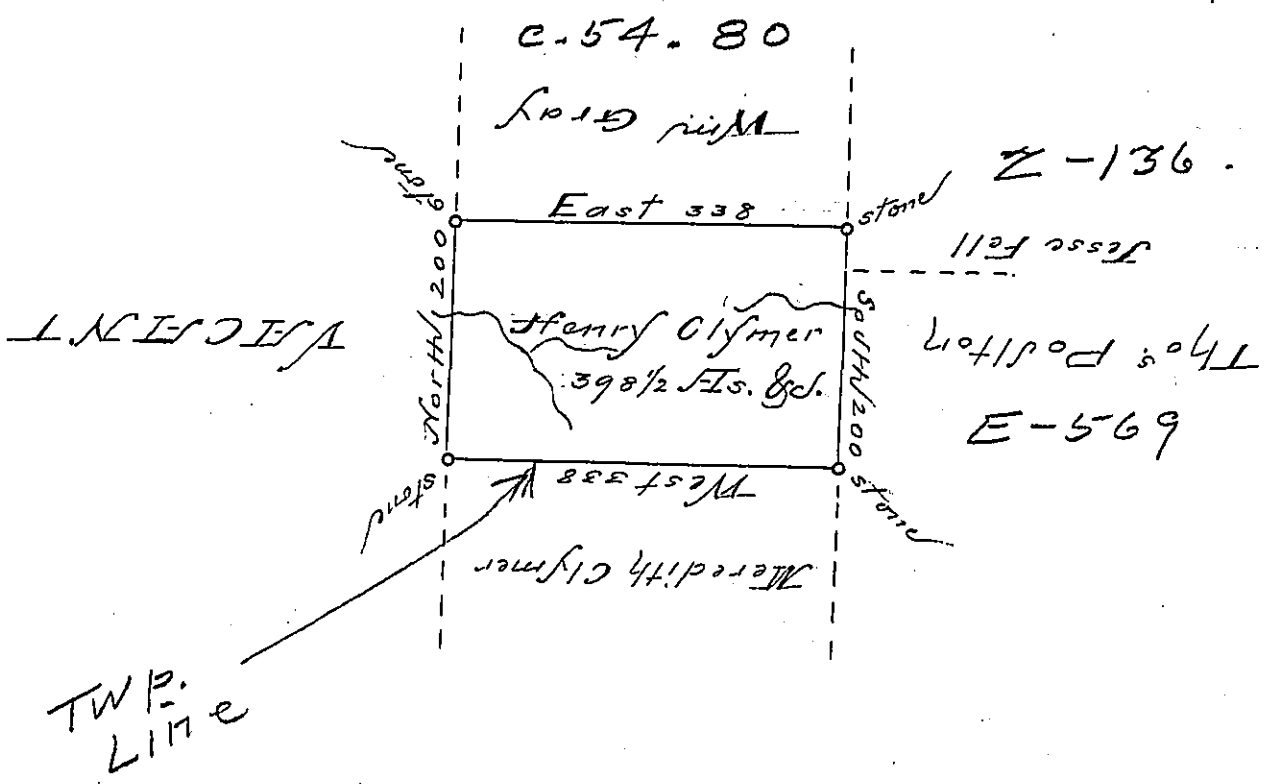


Delison -  
Luzerne.



Draft of a tract of land called  
 Situate on some of the head waters of Lehi & Nes-  
 copeck joining land Surveyed for William Gray  
 & others in Luzerne County containing three hundred  
 & ninety eight acres 1/2 & allowance of six P. Cent for  
 roads &c.

Surveyed for Henry Clymer the 25<sup>th</sup> Day  
 of June 1792 in Pursuance of a Warrant  
 Dated the 4<sup>th</sup> Day of April 1792.

To  
 Daniel Brodhead Esq. } by Wm Gray Esq.  
 Suror. Genl.

IN TESTIMONY that the above is a copy of the original remaining on file in the  
 Department of Internal Affairs of Pennsylvania, made con-  
 formably to an Act of Assembly approved the 16th day of  
 February, 1833, I have hereunto set my Hand and caused  
 the Seal of said Department to be affixed at Harrisburg, this

— Third — day of — September — 1895.

James Watta  
 Secretary of Internal Affairs.